

NOTES:

1. FUSED TERMINAL BLOCKS TO HAVE BLOWN FUSE INDICATIONS.
2. A JUMPER BAR IS REQUIRED TO INTERCONNECT ALL FUSED PART NUMBER 8619 FOR DIGITAL CABLEING BETWEEN FUSE AND PLC CARD MUST BE BELDEN PART NUMBER 9318 TO BE USED FOR ALL ANALOG I/O FIELD WIRING AND BETWEEN THE TERMINAL BLOCK AND THE PLC CARD.
3. ALL SHIELD TERMINAL BLOCKS TO BE GREEN AND ARE TO BE JUMPED TOGETHER AND TERMINATED TO THE SHIELD GROUNDING BAR.

THESE DRAWINGS ARE TEMPLATE DRAWINGS

1. REMOVE THIS NOTE AS PART OF THE DESIGN PROCESS.
2. MODIFY THIS DRAWING AS DIRECTED IN THE SCADA STANDARDS.
3. ADD ADDITIONAL DETAILS AS REQUIRED TO MEET THE PROJECT SPECIAL REQUIREMENTS.
4. WHEN THE CONSULTANT DEVIATES FROM THIS TEMPLATE THEY ARE REQUIRED TO NOTIFY HALTON REGION THROUGH THE USE OF THE STANDARDS DEVIATION MEMO.
5. FUSED TERMINAL BLOCKS AND CIRCUIT BREAKERS TO BE SIZED APPROPRIATELY.
6. SHOW ADDITIONAL TID TRACKS UP TO A MAXIMUM OF 20 ONLY IF NECESSARY BASED ON DESIGN REQUIREMENTS.
7. THE CONSULTANT IS TO SPECIFY SIGNAL ISOLATORS WHERE REQUIRED. FOLLOW MANUFACTURERS' SPECIFICATIONS FOR GROUNDING OF SHIELDS.

NO	Date	By	REVISIONS	MANU	CAD
Design	---	Ch'kd	---	Date	
Drawn	---	Ch'kd	---		
Scale	N.T.S.			References	

Field Notes

Stamp

Regional

ACCEPTED FOR CONSTRUCTION
OF REGIONAL INFRASTRUCTURE

REVIEWED FOR COMPLIANCE WITH
REGIONAL STANDARDS ONLY.

Director, Water & Wastewater Treatment

Manager, Plant Capital & Engineering

Halton
REGION

TITLE

REGIONAL MUNICIPALITY OF HALTON
CONSULTANT PROJECT TITLE

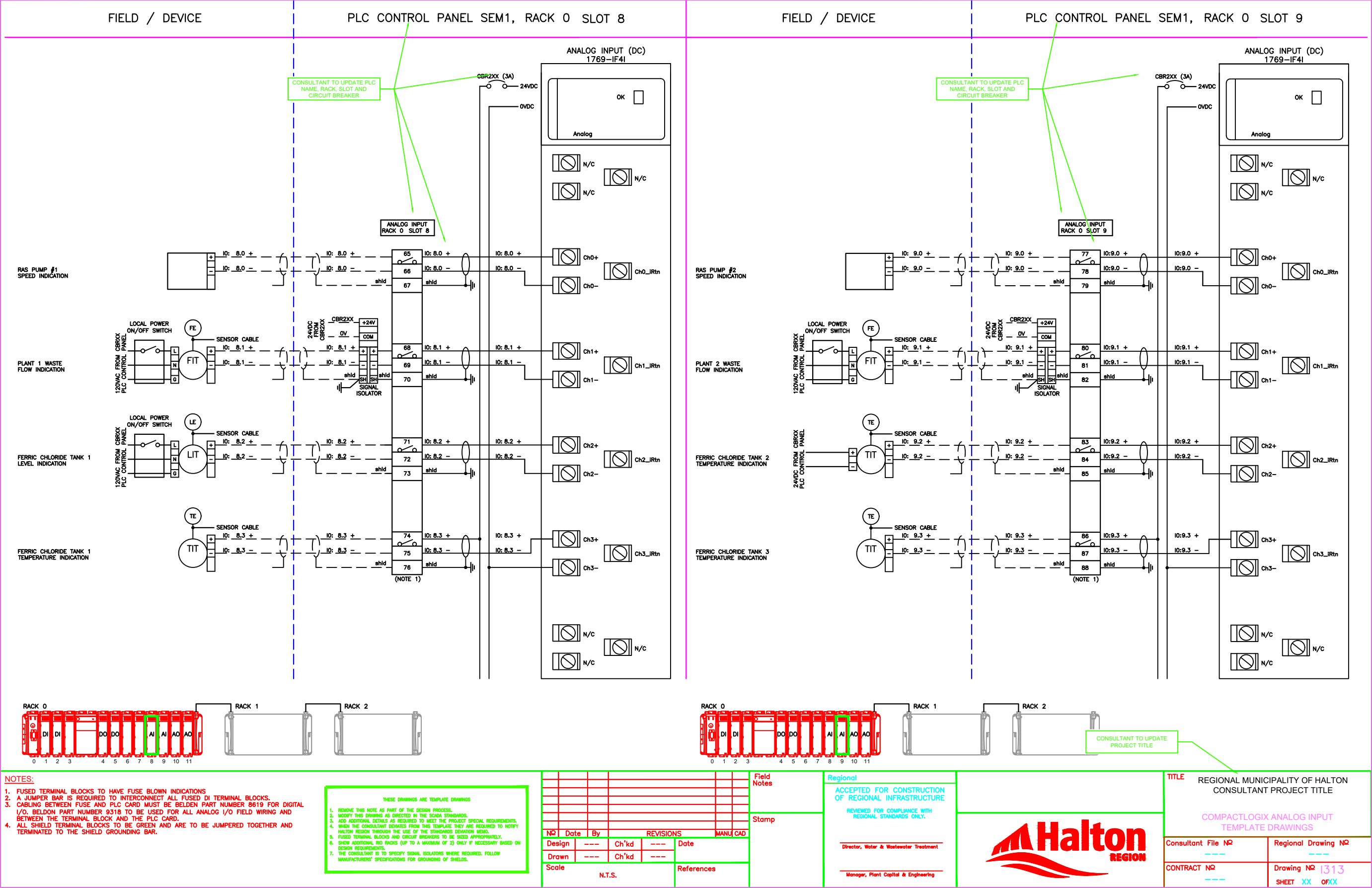
COMPACTLOGIX DIGITAL OUTPUT
TEMPLATE DRAWINGS

Consultant File NR

Regional Drawing NR

CONTRACT NR

Drawing NR 1312
SHEET XX OFXX



NOTES:

1. FUSED TERMINAL BLOCKS TO HAVE FUSE BLOWN INDICATIONS.
2. A JUMPER BAR IS REQUIRED TO INTERCONNECT ALL FUSED PART NUMBER 8619 FOR DIGITAL I/O. BELDON PART NUMBER 9318 TO BE USED FOR ALL ANALOG I/O FIELD WIRING AND BETWEEN THE TERMINAL BLOCK AND THE PLC CARD.
3. ALL SHIELD TERMINAL BLOCKS TO BE GREEN AND ARE TO BE JUMPED TOGETHER AND TERMINATED TO THE SHIELD GROUNDING BAR.

THESE DRAWINGS ARE TEMPLATE DRAWINGS
1. REMOVE THIS NOTE AS PART OF THE DESIGN PROCESS.
2. MODIFY THIS DRAWING AS DIRECTED IN THE SCADA STANDARDS.
3. ADD ADDITIONAL DETAILS AS REQUIRED TO MEET THE PROJECT SPECIAL REQUIREMENTS.
4. WHEN THE CONSULTANT DEVIATES FROM THIS TEMPLATE THEY ARE REQUIRED TO NOTIFY HALTON REGION THROUGH THE USE OF THE STANDARD DEVIATION MEMO.
5. FUSED TERMINAL BLOCKS AND CIRCUIT BREAKERS TO BE SIZED APPROPRIATELY.
6. SHOW ADDITIONAL INDICATORS (UP TO A MAXIMUM OF 2) ONLY IF NECESSARY BASED ON DESIGN REQUIREMENTS.
7. THE CONSULTANT IS TO SPECIFY SIGNAL ISOLATORS WHERE REQUIRED. FOLLOW MANUFACTURERS' SPECIFICATIONS FOR GROUNDING OF SHIELDS.

Field Notes

Stamp

Scale N.T.S.

References

Regional

ACCEPTED FOR CONSTRUCTION
OF REGIONAL INFRASTRUCTURE

REVIEWED FOR COMPLIANCE WITH
REGIONAL STANDARDS ONLY.

Director, Water & Wastewater Treatment

Manager, Plant Capital & Engineering

Halton
REGION

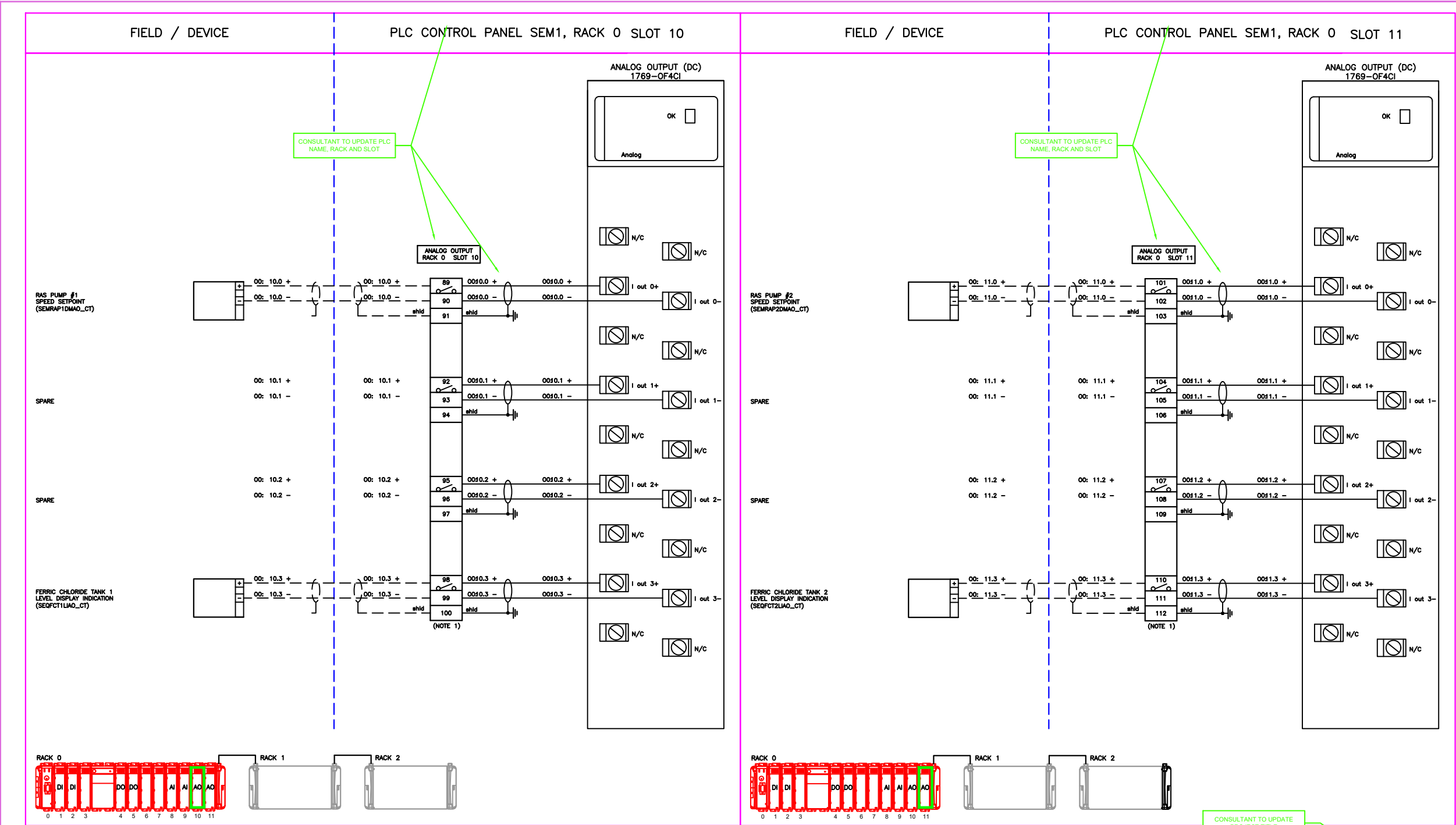
TITLE

REGIONAL MUNICIPALITY OF HALTON
CONSULTANT PROJECT TITLE

COMPACTLOGIX ANALOG INPUT
TEMPLATE DRAWINGS

Consultant File NR
Regional Drawing NR

CONTRACT NR
Drawing NR 1313
SHEET XX OFXX



NOTES:

1. FUSED TERMINAL BLOCKS TO HAVE FUSE BLOWN INDICATIONS
2. A JUMPER BAR IS REQUIRED TO INTERCONNECT ALL FUSED DI TERMINAL BLOCKS.
3. CABLING BETWEEN FUSE AND PLC CARD MUST BE BELDEN PART NUMBER 8619 FOR DIGITAL I/O. BELDEN PART NUMBER 9318 TO BE USED FOR ALL ANALOG I/O FIELD WIRING AND BETWEEN THE TERMINAL BLOCK AND THE PLC CARD.
4. ALL SHIELD TERMINAL BLOCKS TO BE GREEN AND ARE TO BE JUMPED TOGETHER AND TERMINATED TO THE SHIELD GROUNDING BAR.

THESE DRAWINGS ARE TEMPLATE DRAWINGS

1. REMOVE THIS NOTE AS PART OF THE DESIGN PROCESS.
2. MODIFY THIS DRAWING AS DIRECTED IN THE SCADA STANDARDS.
3. ADD ADDITIONAL DETAILS AS REQUIRED TO MEET THE PROJECT SPECIAL REQUIREMENTS.
4. WHEN THE CONSULTANT DEVIATES FROM THIS TEMPLATE THEY ARE REQUIRED TO NOTIFY HALTON REGION THROUGH THE USE OF THE STANDARDS DEVIATION MEMO.
5. FUSED TERMINAL BLOCKS AND CIRCUIT BREAKERS TO BE SIZED APPROPRIATELY.
6. SHOW ADDITIONAL RIO RACKS (UP TO A MAXIMUM OF 2) ONLY IF NECESSARY BASED ON DESIGN REQUIREMENTS.
7. THE CONSULTANT IS TO SPECIFY SIGNAL ISOLATORS WHERE REQUIRED. FOLLOW MANUFACTURERS' SPECIFICATIONS FOR GROUNDING OF SHIELDS.

NO	Date	By	REVISIONS	MANU CAD
Design	---	Ch'kd	---	Date
Drawn	---	Ch'kd	---	References
Scale	N.T.S.			

Field Notes

Stamp

Regional

ACCEPTED FOR CONSTRUCTION OF REGIONAL INFRASTRUCTURE

REVIEWED FOR COMPLIANCE WITH REGIONAL STANDARDS ONLY.

Director, Water & Wastewater Treatment

Manager, Plant Capital & Engineering



TITLE REGIONAL MUNICIPALITY OF HALTON CONSULTANT PROJECT TITLE

COMPACTLOGIX ANALOG OUTPUT TEMPLATE DRAWINGS

Consultant File NO

Regional Drawing NO

CONTRACT NO

Drawing NO 1314

SHEET XX OF XX